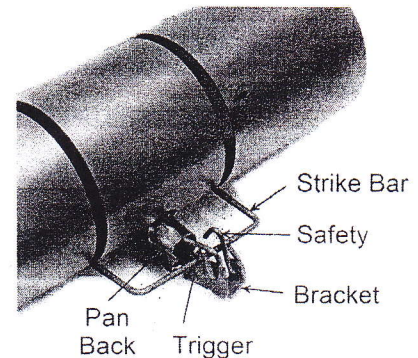
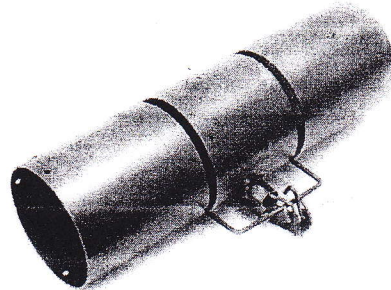


Product Instructions

Wildlife Control Supplies is pleased to offer the new & improved **TUBE TRAP®!**



The **TUBE TRAP®** is 15 inches in length and is powered by a "beefy" double torsion spring. The parts are all precision cut by laser so there are no sharp edges to contend with.

This trap can be used in either a baited or un-baited manner, as the trap itself is an attractant, squirrels want to either run through it or hide in it. When a capture is made, the squirrel is generally hidden from public view. **CAUTION - This is a lethal trap, use special care when and where setting. Use the SAFETY hook when positioning the trap, and take it off once the trap is in the target location.**

DIRECTIONS: Select appropriate location to position trap by monitoring squirrel travel ways. **CAUTION - If using bait, apply bait to pan inside trap BEFORE setting the trap, or make sure the SAFETY is latched over the strike bar while applying the bait.**

Parts

1. **Trigger (Dog)**- floppy L-shaped piece attached to the bracket.
2. **Pan back**- the cap piece screwed to the bracket attached to the Pan
3. **Bracket**- the piece soldered to the bottom of the tube. The rod with coils springs, the pan and trigger are all attached to the bracket.
4. **Tube**- round steel body of the trap
5. **Coil springs**- springs attached to the strike bar mechanism
6. **Strike Bar**- metal bar inserted into trap that looks like a handle
7. **Pan**- located inside tube where animal sets off trap.
8. **Safety**- a hook next to the trigger that can hold the strike bar in place while the trap is set.

SETTING DIRECTIONS: To set the trap, position the trap in front of you with the Strike Bar and the Coil Springs next to your body. The Trigger and Pan Back is jutting out on the other side of the tube away from your body. See trap pictured above. Flip the Trigger and the Safety so they are both pointing up toward the ceiling. Press down the Strike Bar, with the palms of your hand, so that it touches the Bracket. While holding down the Strike Bar, take a finger and flip the Trigger over the Strike Bar then flip the Pan Back so it slips over the Trigger end. The Strike Bar applies tension on the trigger and pan back. Now you are able to flip the Safety before the Strike Bar to make transporting the trap easier and safer. **DO NOT STICK FINGERS INSIDE. The TRAP IS NOW SET.... use caution when positioning.**

PAN ADJUSTMENT: You can adjust the pan sensitivity by adjusting the location of the trigger (dog) in the Pan Back. Push up the Pan Back to make the pan less sensitive. Position the very end of trigger into the back of the pan to make it more sensitive. This also lowers the pan inside the trap.